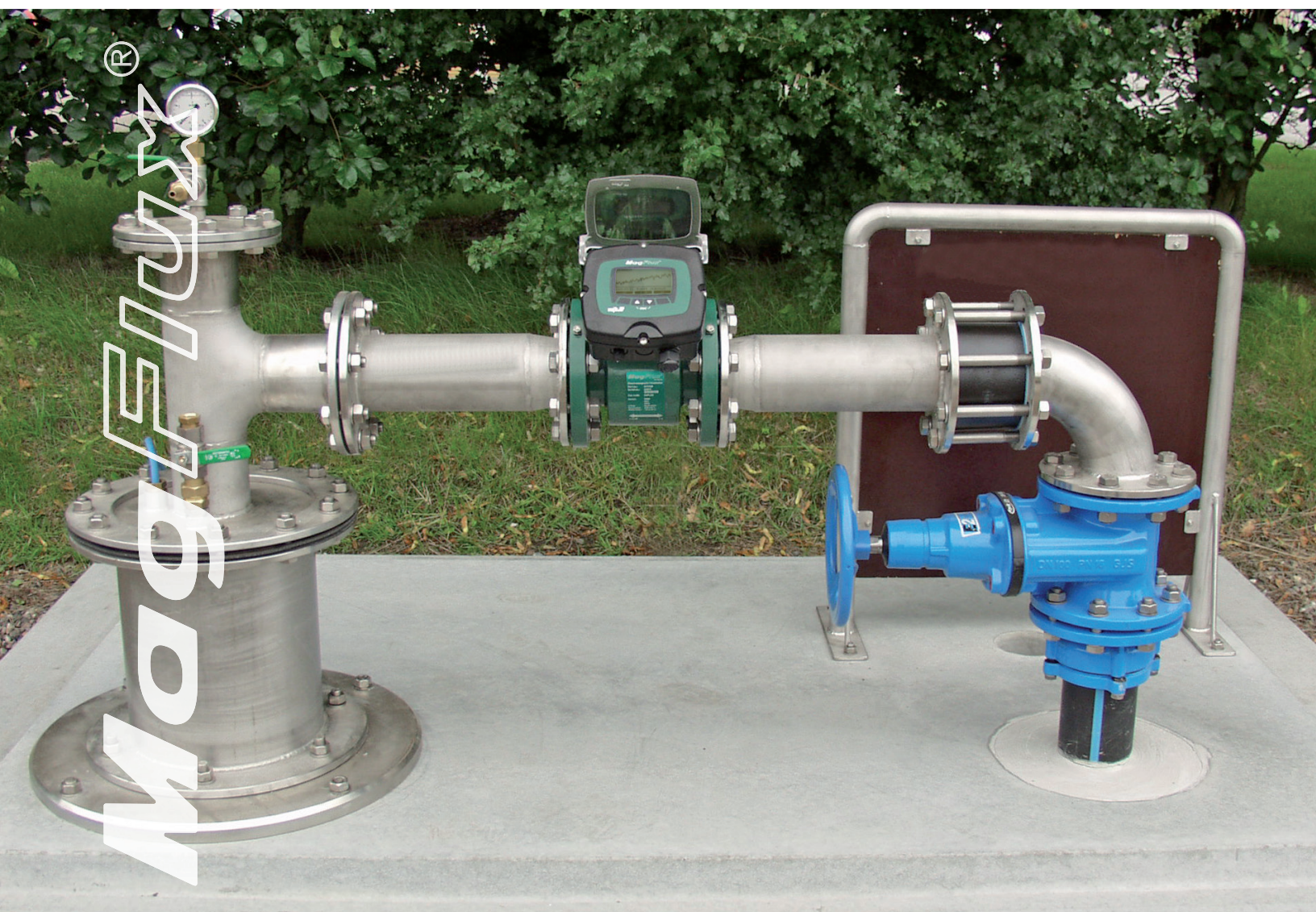


## ELECTROMAGNETIC FLOWMETERS





## PROVEN AND RELIABLE FLOW MEASUREMENT

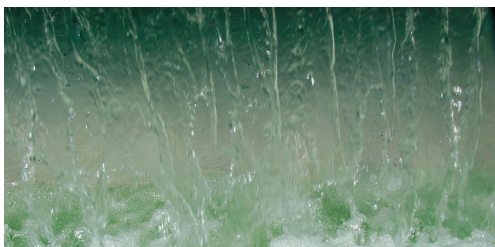
MJK MagFlux® flow meters combine high accuracy, stability and low maintenance.

Without moving parts, straight through flow sensor and self-cleaning electrodes there is virtually never any need for maintenance, there is no influence on the flow rate, and no pressure drop caused by the flow sensor.

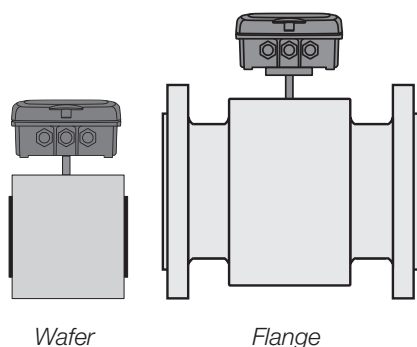
MagFlux® flow meters use a tested and approved sensing technology giving linear readings over a large range in closed, pressurized pipe systems.



[www.mjk.com](http://www.mjk.com)



# LARGE SELECTION OF SIZES AND MATERIALS



*MagFlux® is available in sizes from 1/8" to 80" with standard lay lengths and standard EN, ANSI, AWWA, AS and JIS pipe connections.*



Model	7100	7200	7300	7400
Mounting	Flange	Flange	Wafer	Wafer
Liner	PTFE	Hard rubber	PTFE	Hard rubber
1/8"			•	
1/4"			•	
5/16"			•	
3/8"			•	
1/2"	•	•	•	•
3/4"	•	•	•	•
1"	•	•	•	•
1 1/4"	•	•	•	•
1 1/2"	•	•	•	•
2"	•	•	•	•
2 1/2"	•	•	•	•
3"	•	•	•	•
4"	•	•	•	•
5"	•	•	•	•
6"	•	•	•	•
8"	•	•	•	•
10"	•	•		
12"	•	•		
14"	•	•		
16"	•	•		
18"	•	•		
20"	•	•		
24"	•	•		
28"	•	•		
32"	•	•		
36"		•		
40"		•		
48"		•		



## A BREAKTHROUGH IN SENSOR SET-UP SIMPLICITY

MJK's unique registration code for each sensor feeds all the necessary data into the meters electronics. In a matter of seconds the registration is completed, and the sensor characteristics and meter electronics are fully matched and ready to perform flow measurements.

It is safer than other systems that require memory chips that get lost or damaged, or complicated procedures requiring external equipment that have potential for mistakes.

MagFlux® sensor direction is also configured in the electronics, so there is no way to install a sensor backwards.



REGISTRATION CODE

# COMPREHENSIVE FLOW AND BATCH CONTROL FUNCTIONS



The MagFlux® Converter has one 4 - 20 mA output, two relays for control and alarms, one digital input for batch or alarm reset, keypad start and stop of batch counters and reset of counters, totalizers and alarms. Pop-up windows alert the user about operational and alarm functions which are automatically logged and easily reset.

Batching, batch counters, forward, reverse and net totalizers and non-resettable totalizers are all on-board and easy to configure.

With its cell-phone like navigation, finding and managing these features is simple, but you can also password protect your settings.

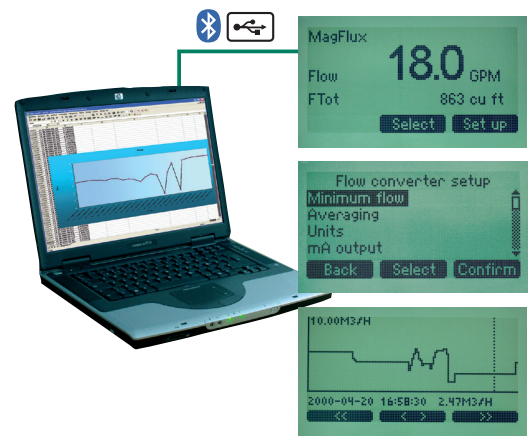


# BEST-IN-CLASS DATA LOGGING AND NETWORKING

MagFlux® is the first to bring you an on-board electronic chart recorder that graphs flow rates, and shows the date, time and flow rate for each data point. Behind the scene is a data logger that you can set with the data logging interval. To capture data for your permanent records, simply use the USB connection in the MagFlux® Display and the MJK Field Link freeware. It delivers not only the graphed data, but also a CSV data file (up to 160,000 data points) that you can open with MS Excel on your PC.

For SCADA users MJK provides RS-485 communication with Modbus protocol along with registers, so that several MJK MagFlux® flow meters can be seamlessly operated from a control room.

MagFlux® never gets out of date. The USB port also allows up loading new software, features and several languages from a PC.



**PROFI<sup>®</sup>**  
**BUS**

**Modbus**

Main Menu

Specify Main Screen  
Factory Settings  
Data logger  
Password  
Set Sensor Name  
Converter Setup  
Display Setup

Back

Select

OK



SUSIX®

TURBIDITY AND  
SUSPENDED SOLIDS

OXIX®

DISSOLVED OXYGEN

MAGFLUX®

FLOW

MAGFLUX®

FOUR INPUTS ON  
ONE DISPLAY  
W/MAGFLUX  
CONVERTER AND  
SENSOR



# LOCATE AND CONFIGURE MAGFLUX YOUR WAY



MagFlux® Converter and Display can stay locally with the flow sensor or be installed remotely.

A single Display can be used for set-up, viewing and data logging for one, two, three, or four Converters and Sensors in their own network to save space and cost.

The Display can be up to 3000 ft from a Converter allowing the Converter to be where the electrical and control connections are, while the Display can be where the operators are.

The Converter can be separated from the sensor, too! This allows even more flexibility to locate the Converter where electrical connections are needed and out danger of submersion, burial or other hazards.

Wall mounting or panel mounting is possible for all MagFlux® electronic units.

COMPACT MOUNTED



PANEL MOUNTING



WALL MOUNTING



1

Converter and Display mounted directly on the flow sensor (Compact Mounted).



2

Display is mounted remotely from the Converter and Flow Sensor.



Max. 3,000 ft

3

Both the Display and Converter are together and mounted remotely from the Flow Sensor.



Max. 150 ft

4

The Converter is mounted remote from the Sensor and the Display is Mounted remote from the Converter.



Max. 150 ft

Max. 3,000 ft

5

One remote mounted Display operates two Converters and flow sensors that are mounted together.



Max. 3,000 ft

Max. 3,000 ft

MagFlux® Sensor	
Mounting	Flange or wafer
Materials	Housing: Painted carbon or stainless steel Liner: Hard rubber, soft rubber or PTFE Electrodes: Stainless steel 1.4571 (AISI 316). On order Hastelloy, titanium or platinum
Built-in grounding electrode	≥ DN 50
Accuracy	Better than ± 0,25%
Temperature	Liquid: 0 to + 300° F, depending of type. Surroundings: 15 to +140° F (converter mounted on sensor) 0 to +200° F (converter remote mounted)
Enclosure	IP 67 (with gel potting IP 68) / NEMA 4X (with gel potting NEMA 6P)

MagFlux® Converter	
Accuracy	± 0,1% of measurement (system accuracy better than ± 0,25 %)
Input	From MagFlux® sensor
Analog output	One active 4 - 20 mA, galvanic isolated (max. 800 Ω)
Digital output	One voltage-free, electromechanical relay (max. 50 V DC / 1 A) One optically isolated (max. 50 V AC / V DC / 120 mA)
Digital input	One digital input. Max. 30 V DC
Communication	Modbus® RTU, 9600 Baud, 2-wire RS-485, slave-mode
Datalogger	Display 160,000 logs with date, time, value and daily totals
Interface	RS 485 for connection to Display Unit or PLC.
Power supply	24 V AC / DC, 50 / 60 Hz ± 10 % or 10 - 30 V DC or 230 / 115 V AC, 50 / 60 Hz ± 10 %
Power consumption	Max. 10 W
Cabinet materials	Polycarbonate, glass reinforced
Enclosure rating	IP 67 / NEMA 4X



**MJK Automation A/S**  
Byageren 7  
2850 Nærum  
Denmark  
Tel.: +45 45 56 06 56  
Fax: +45 45 56 06 46  
www.mjk.dk  
mjk@mjk.dk

**MJK Automation AS**  
Prins Chr.Augusts Plass 1  
1530 Moss  
Norway  
Tel.: +47 69 20 60 70  
Fax: +47 69 20 60 71  
www.mjk.no  
mjk@mjk.no

**MJK Automation AB**  
Nytorget 4  
S-66123 Säfle  
Sweden  
Tel.: +46 53 31 77 50  
Fax: +46 53 31 38 11  
www.mjk.se  
kontoret@mjk.se

**MJK Automation B.V.**  
Hoofdweg 667 A  
2131 BB Hoofddorp  
Holland  
Tel.: +31 0251-672171  
Fax: +31 0251-671951  
nl.mjk.com  
mjknl@mjk.com

**MJK Ireland Ltd.**  
IDA Industrial & Business Park  
Purcellsinn, Dublin Road  
Kilkenny  
Ireland  
Tel.: +353 8795 35625  
www.mjk.com  
mjk@mjk.com

**MJK Automation P/L**  
Unit 8/69 Acacia Road  
Ferntree Gully 3156  
Victoria Australia  
Ph: +61 3 9758 8533  
Fax: +61 3 9758 8633  
au.mjk.com  
mjkau@mjk.com

**MJK North America Inc.**  
37 Sherwood Terrace, #126  
Lake Bluff IL 60044  
USA  
Toll Free: +01 877-655-5465  
+01 (877-MJK-LINK)  
Local: +01 847-482-8655  
Fax: +01 847-482-8654  
us.mjk.com  
mjkusa@mjk.com